










Worklist: 4585



<u>LAB CASE</u>	<u>ITEM</u>	<u>ITEM TYPE</u>	<u>DESCRIPTION</u>	
M2020-3661	1	BCK	AM 25/AM 26 Blood MultiDrug/THC Screen by LC-QQQ	
M2020-3754	1	BCK	AM 25/AM 26 Blood MultiDrug/THC Screen by LC-QQQ	
M2020-3764	1	BCK	AM 25/AM 26 Blood MultiDrug/THC Screen by LC-QQQ	
M2020-3765	1	BCK	AM 25/AM 26 Blood MultiDrug/THC Screen by LC-QQQ	
M2020-3816	1	BCK	AM 25/AM 26 Blood MultiDrug/THC Screen by LC-QQQ	
M2020-3889	3	BCK	AM 25/AM 26 Blood MultiDrug/THC Screen by LC-QQQ	
M2020-3973	2	BCK	AM 25/AM 26 Blood MultiDrug/THC Screen by LC-QQQ	
M2020-3996	2	BCK	AM 25/AM 26 Blood MultiDrug/THC Screen by LC-QQQ	
P2020-2772	1	BCK	AM 25/AM 26 Blood MultiDrug/THC Screen by LC-QQQ	
P2020-2819	1	BCK	AM 25/AM 26 Blood MultiDrug/THC Screen by LC-QQQ	
P2020-2820	1	BCK	AM 25/AM 26 Blood MultiDrug/THC Screen by LC-QQQ	
P2020-2822	1	BCK	AM 25/AM 26 Blood MultiDrug/THC Screen by LC-QQQ	
P2020-2945	1	BCK	AM 25/AM 26 Blood MultiDrug/THC Screen by LC-QQQ	
P2020-2950	1	BCK	AM 25/AM 26 Blood MultiDrug/THC Screen by LC-QQQ	
P2020-2951	1	BCK	AM 25/AM 26 Blood MultiDrug/THC Screen by LC-QQQ	
P2020-2952	1	BCK	AM 25/AM 26 Blood MultiDrug/THC Screen by LC-QQQ	
P2020-2954	1	BCK	AM 25/AM 26 Blood MultiDrug/THC Screen by LC-QQQ	
P2020-2955	1	BCK	AM 25/AM 26 Blood MultiDrug/THC Screen by LC-QQQ	
P2020-2965	1	BCK	AM 25/AM 26 Blood MultiDrug/THC Screen by LC-QQQ	
P2020-2969	1	BCK	AM 25/AM 26 Blood MultiDrug/THC Screen by LC-QQQ	

Worklist: 4585

\$

<u>LAB CASE</u>	<u>ITEM</u>	<u>ITEM TYPE</u>	<u>DESCRIPTION</u>	
P2020-2972	1	BCK	AM 25/AM 26 Blood MultiDrug/THC Screen by LC-QQQ	
P2020-2986	1	BCK	AM 25/AM 26 Blood MultiDrug/THC Screen by LC-QQQ	
P2020-3000	1	BCK	AM 25/AM 26 Blood MultiDrug/THC Screen by LC-QQQ	
P2020-3003	1	BCK	AM 25/AM 26 Blood MultiDrug/THC Screen by LC-QQQ	
P2020-3007	1	BCK	AM 25/AM 26 Blood MultiDrug/THC Screen by LC-QQQ	
P2020-3007	2	BCK	AM 25/AM 26 Blood MultiDrug/THC Screen by LC-QQQ	
P2020-3007	3	BCK	AM 25/AM 26 Blood MultiDrug/THC Screen by LC-QQQ	
P2020-3011	1	BCK	AM 25/AM 26 Blood MultiDrug/THC Screen by LC-QQQ	
P2020-3013	1	BCK	AM 25/AM 26 Blood MultiDrug/THC Screen by LC-QQQ	

Worklist: 4587

<u>LAB CASE</u>	<u>ITEM</u>	<u>ITEM TYPE</u>	<u>DESCRIPTION</u>	
P2020-2823	1	BCK	AM 25/AM 26 Blood MultiDrug/THC Screen by LC-QQQ	
P2020-2832	2	BCK	AM 25/AM 26 Blood MultiDrug/THC Screen by LC-QQQ	

\$

AM# 25: Multi-Drug Screen in Blood by LC-MS/MS

Extraction Date: 11/04/20
Plate lot#: IDP-107-2-200511

Analyst: Sarah Pickle
Plate Expiration: 11/11/2020

Mobile phase A: 10mM Amm Form
0.5M Ammonium Hydroxide
Blank Blood Lot: Hemostat 445283-4
LCMS-QQQ ID: 069901

Mobile phase B: 0.1% Formic Acid in MeOH
Ethyl Acetate LC Methanol
Column: Phenomenex Phenyl Hexyl (4.6x50mm, 2.6um)

Pre-Analytic:

- 1. Check levels of mobile phases and needle wash refill as needed. Ensure waste is not full.
- 2. Ensure correct column is installed and begin mobile phase flow allow to equilibrate ~ 30 minutes.

Analytic:

- 1. Remove standards, plate, controls, and samples from cold storage. Allow to reach room temperature.
- 2. Pipette **250 µL blood (calibrated pipette)** in wells of analytical (standards) plate. **Pipette ID: #16**
- 3. Place on shaking incubator at ambient temp., 900 rpm for 15 minutes.
- 4. Pipette **250 µL of 0.5 M ammonium hydroxide** in wells of analytical plate.
- 5. Place on shaking incubator at ambient temp., 900 rpm for 15 minutes.
- 6. Transfer **300 µL of blood+base** mixture to corresponding wells of SLE+ plate.
- 7. Apply positive pressure for approx. 10-15 seconds (or until no liquid remains on top of sorbent).
(Load at 85-100 PSI- Selector to the right)
- 8. Wait 5 minutes.
- 9. Add **900 µL ethyl acetate.**
- 10. Wait 5 minutes.
- 11. Apply positive pressure for approx. 10-15 seconds. *(12-15 PSI- Selector to the left).*
- 12. Add **900 µL ethyl acetate.**
- 13. Wait 5 minutes.
- 14. Apply positive pressure for approx. 10-15 seconds. *(12-15 PSI- Selector to the left).*
- 15. Remove plate containing eluate. Place on SPE Dry and evaporate to dryness at approx. 35°C.
- 16. Reconstitute in **100 µL 20% LC MeOH** and heat seal plate with foil. Place in autosampler and run worklist.

Post-Analytic

- 1. Open quantitation software and create a new quantitation batch.
- 2. Make necessary changes to integration limits
- 3. Evaluate samples, S/N of primary transition >5 and S/N of secondary transition >3 or evaluation of peak symmetry and resolution. Within +/- 2% or 0.1 min RT of administrative control. Calculated concentration 5 or greater or 2-5 for discretionary range.
- 4. Did all QCs pass for each analyte? Y / N _____
- 5. Central File Packet to include: LIMS Worklist, Method Checklist, Calibration and Control Reports

COMMENTS:

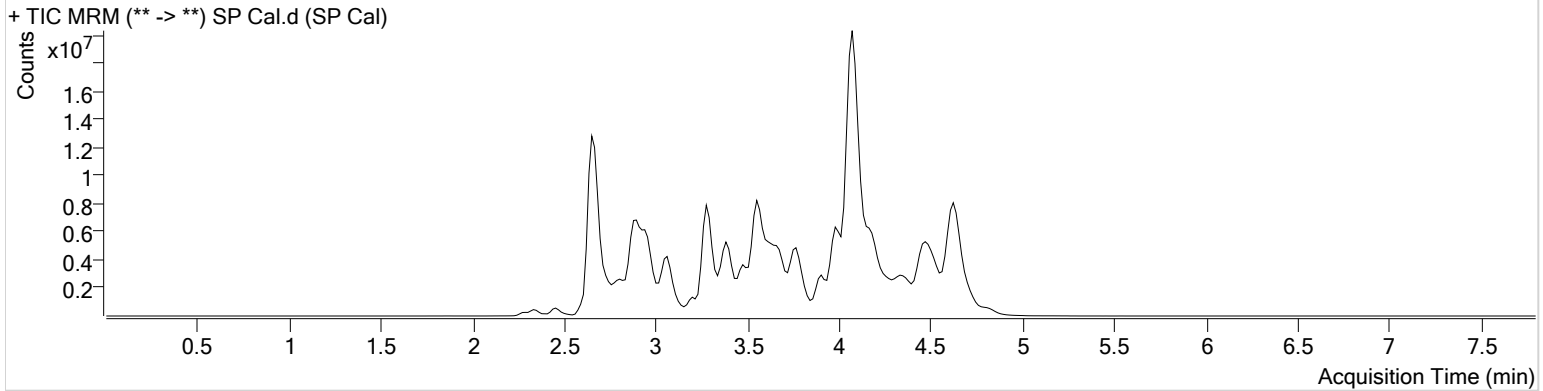
AM #25 Multi-Drug Screen Results



Batch results D:\MassHunter\Data\2020\AM 25-26\AM 25 110420 CS\QuantResults\AM 25 SP.batch.bin
Calibration Last Update 11/5/2020 2:03:09 PM

Instrument	Falco	Data File	SP Cal.d
Type	Cal	Sample	SP Cal
Acq. Method	AM 25 061720.m	Operator	Sarah Pickle
Sample Position	P2-A1	Comment	
Injection Volume	5		
Acq. Date-Time	11/4/2020 9:56:37 PM		

Sample Chromatogram



Name	RT	Resp.	S/N	S/N	ISTD Resp.	Calc. Conc.
6-MAM	2.877	50259	∞	3935.54	1392018	10.0000
7-aminoclonazepam	3.584	1187424	1616.45	1333.00	4525496	10.0000
7-aminoflunitrazepam	3.783	2091904	588.69	636.71	4525496	10.0000
Acetyl Fentanyl	3.780	74682	67.50	17633.14	26237932	10.0000
Acetyl Norfentanyl	2.870	238300	∞	∞	26237932	10.0000
a-hydroxyalprazolam	4.485	282900	∞	72514.91	4525496	10.0000
alpha-hydroxymidazolam	4.576	1521884	1032.48	252444.98	4525496	10.0000
Alpha-PHP	3.773	2070634	∞	∞	26237932	10.0000
alpha-PVP	3.498	3245988	∞	759.47	4838510	10.0000
Alprazolam	4.611	2399775	809.92	2178.58	21963509	10.0000
Amitriptyline	4.384	185076	5.60	21.48	524395	10.0000
Amphetamine	2.829	1679809	404.14	∞	4838510	10.0000
Benzoylcegonine	3.385	867209	∞	822.74	399641	10.0000
Brompheniramine	3.995	28708	25.44	522.90	21149951	10.0000
Buprenorphine	4.267	169620	483.48	2005.90	774225	10.0000
Bupropion	3.697	2656008	∞	657.15	9670816	10.0000
Carbamazepine	4.204	8632173	∞	1742.81	735121	10.0000
Carisoprodol	4.187	1490430	104773.36	∞	7912857	10.0000
Chlordiazepoxide	4.674	851863	72.87	427.60	21963509	10.0000
Chlorpheniramine	3.908	6338	12.84	1354.03	21149951	10.0000
Citalopram	4.025	1049062	∞	201589.24	21149951	10.0000
Clomipramine	4.563	152524	∞	∞	21149951	10.0000
Clonazepam	4.394	1595887	∞	314.91	21963509	10.0000
Clonazolam	4.345	1138757	35402.68	14049.85	21963509	10.0000
Cocaethylene	3.765	4113472	∞	39183.59	23108066	10.0000
Cocaine	3.552	4095503	∞	6504.04	23108066	10.0000
Codeine	2.790	300154	2742.47	479.03	8411969	10.0000
Cyclobenzaprine	4.308	220537	8965.24	6.86	524395	10.0000
Desipramine	4.325	299804	161.29	50.77	524395	10.0000
Dextromethorphan	4.047	463065	1999.95	44719.63	2482491	10.0000
Dextrorphan	3.356	1787890	∞	845.81	2482491	10.0000
Diazepam	4.813	1181889	583.43	576.87	21963509	10.0000
Dihydrocodeine	2.743	841690	572.06	484.75	8411969	10.0000
Diphenhydramine	3.986	2874552	∞	151.98	21149951	10.0000

SP Cal

\$



AM #25 Multi-Drug Screen Results

Name	RT	Resp.	S/N	S/N	ISTD Resp.	Calc. Conc.
Doxepin	4.107	232669	∞	∞	5845318	10.0000
Doxylamine	3.632	6921040	∞	∞	2482491	10.0000
EDDP	4.077	3606242	∞	14232.90	2033960	10.0000
Estazolam	4.520	5423596	∞	1659.18	21963509	10.0000
Etizolam	4.636	321755	12738.75	∞	21963509	10.0000
Fentanyl	4.009	34591	∞	9815.85	2181179	10.0000
Flualprazolam	4.484	903558	3215.19	545.37	21963509	10.0000
Flunitrazepam	4.533	2623812	25144.87	698344.79	21963509	10.0000
Fluoxetine	4.273	120045	304.18	3.60 Low	271822	10.0000
Flurazepam	4.114	1016315	131704.36	9024.20	21963509	10.0000
Hydrocodone	2.973	1322960	∞	∞	8411969	10.0000
Hydromorphone	2.457	1069759	∞	∞	186772	10.0000
Imipramine	4.338	533696	1418.83	∞	524395	10.0000
Ketamine	3.374	2849197	∞	159.83	10513250	10.0000
Lamotrigine	3.511	246490	∞	714.15	21149951	10.0000
Levamisole	2.932	2021743	∞	∞	23108066	10.0000
Levetiracetam	2.614	1334158	806.89	1121.29	21149951	10.0000
Lorazepam	4.394	481252	281.42	∞	21963509	10.0000
Maprotiline	4.384	177769	∞	14.68	524395	10.0000
MDA	2.964	1958257	∞	∞	7942415	10.0000
MDEA	3.207	3192373	∞	1277.21	7942415	10.0000
MDMA	3.055	4085898	∞	784.25	7942415	10.0000
Meperidine	3.557	1333094	1153.84	∞	2482491	10.0000
Meprobamate	3.622	728326	∞	∞	7912857	10.0000
Methadone	4.365	1539695	499.35	2500.15	2033960	10.0000
Methamphetamine	2.950	1194204	∞	110.80	7942415	10.0000
Methocarbamol	3.542	451878	368.05	∞	2033960	10.0000
Methylphenidate	3.482	7010960	87.32	103.48	9924737	10.0000
Metoprolol	3.418	467653	1296.51	∞	2482491	10.0000
Midazolam	4.699	485245	598.72	69.76	21963509	10.0000
Mirtazapine	3.770	1353463	18523.99	2825.14	2482491	10.0000
Mitragynine	4.144	64465	∞	2762.66	2482491	10.0000
Morphine	2.291	225606	256.31	300.09	186772	10.0000
Norbuprenorphine	3.792	23967	159.89	26014.93	774225	10.0000
Nordiazepam	4.661	1512280	539.00	1247.62	21963509	10.0000
Norfentanyl	3.298	5189874	∞	∞	26237932	10.0000
Norhydrocodone	2.913	53131	∞	22.18	186772	10.0000
Norketamine	3.406	485079	∞	∞	10513250	10.0000
Normeperidine	3.559	1005634	31428.19	211.23	21149951	10.0000
Noroxycodone	2.865	1525068	∞	364.80	10513250	10.0000
Nortriptyline	4.371	78446	394.81	26.73	524395	10.0000
O-desmethyl-tramadol	2.884	6196225	11347.81	103.51	21149951	10.0000
Olanzapine	3.199	5347	17.09	7.46	735121	10.0000
Oxazepam	4.475	2640335	∞	560.26	17293658	10.0000
Oxycodone	2.894	2302261	∞	580.25	10513250	10.0000
Oxymorphone	2.332	1122625	158.96	606.36	186772	10.0000
Paroxetine	4.300	12697	17.57	332.56	271822	10.0000
Phenazepam	4.606	2861135	169983.50	∞	21963509	10.0000
Phencyclidine	3.911	2881160	31178.86	2067.17	2482491	10.0000
Phentermine	3.087	539021	172.99	13.52	9924737	10.0000
Phenytoin	4.095	1261454	81190.65	∞	735121	10.0000
Promethazine	4.275	526064	243.29	60.49	21149951	10.0000
Pseudoephedrine	2.660	48448874	∞	27559.46	7942415	10.0000
Quetiapine	4.298	1118322	237593.78	202008.86	38293055	10.0000
Sertraline	4.504	53661	465.69	29.29	271822	10.0000
Sufentanil	4.298	17829	51.85	36.23	26237932	10.0000
Tapentadol	3.406	3417818	∞	398.33	10513250	10.0000
Temazepam	4.643	4178210	13748.75	468.47	21963509	10.0000
Tramadol	3.387	6969244	3201.80	137.07	21149951	10.0000
Trazodone	4.299	1216320	160.53	884.19	5845318	10.0000

\$



AM #25 Multi-Drug Screen Results

Name	RT	Resp.	S/N	S/N	ISTD Resp.	Calc. Conc.
Venlafaxine	3.754	4737152	6956.08	∞	271822	10.0000
Zaleplon	4.336	2714525	79634.78	1428.30	38293055	10.0000
Zolpidem	4.089	6782700	423.32	279.59	38293055	10.0000
Zopiclone	3.914	907302	72287.38	∞	4365729	10.0000

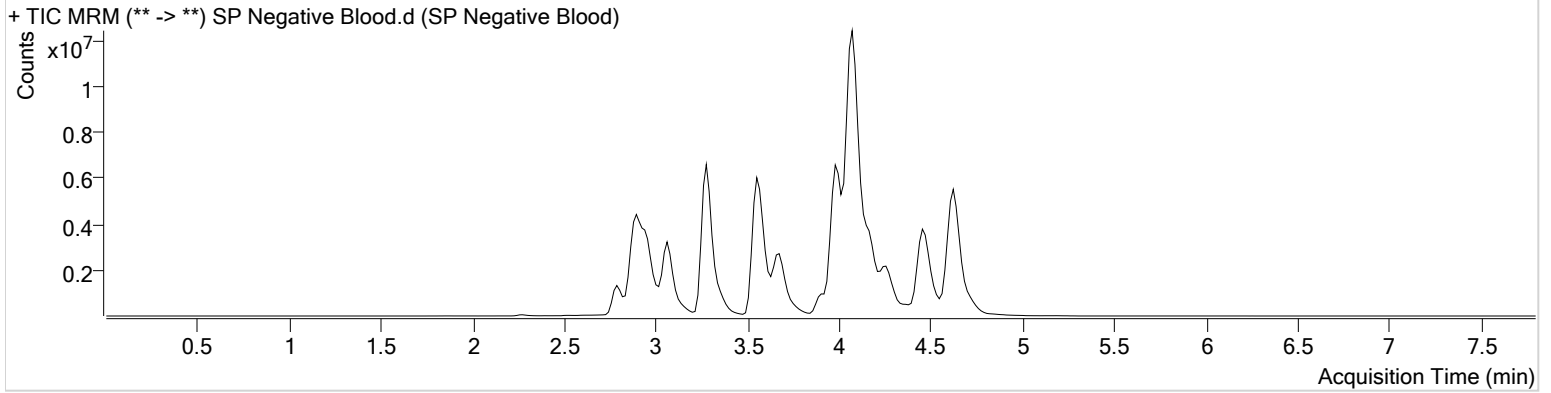
AM #25 Multi-Drug Screen Results



Batch results D:\MassHunter\Data\2020\AM 25-26\AM 25 110420 CS\QuantResults\AM 25 SP.batch.bin
Calibration Last Update 11/5/2020 2:03:09 PM

Instrument	Falco	Data File	SP Negative Blood.d
Type	Sample	Sample	SP Negative Blood
Acq. Method	AM 25 061720.m	Operator	Sarah Pickle
Sample Position	P2-E1	Comment	
Injection Volume	5		
Acq. Date-Time	11/4/2020 10:05:11 PM		
Sample Info.			

Sample Chromatogram



S

AM# 26: THC and Metabolites Screen in Blood by LC-MS/MS

Extraction Date: 11/04/20

Analyst: Sarah Pickle

Plate lot#: IDP-108-2-200723

Plate Expiration: 01/23/21

Mobile phase A: 10mM Ammonium Formate
0.1% Formic Acid in Water

Mobile phase B: 0.1% Formic acid in MeOH
MTBE Hexane

Blank Blood Lot: Hemostat 445283-4

Column: Phenomenex Phenyl Hexyl (4.6x50mm: 2.6 um)

LCMS-QQ ID: 069901

Pre-Analytic:

- 1. Check levels of mobile phases and needle wash refill as needed. Ensure waste is not full.
- 2. Ensure correct column is installed and begin mobile phase flow allow to equilibrate ~ 30 minutes.

Analytic:

- 1. Remove standards, plate, controls, and samples from cold storage. Allow to reach room temperature.
- 2. Pipette **1000 µL blood (calibrated pipette)** in wells of analytical (standards) plate. **Pipette ID: 3382167**
- 3. Place on shaking incubator at ambient temp., 900 rpm for 15 minutes.
- 4. Pipette **500 µL 0.1% formic acid** in wells of analytical plate.
- 5. Place on shaking incubator at ambient temp., 900 rpm for 15 minutes.
- 6. Transfer **800 µL of blood+base** mixture to corresponding wells of SLE+ plate.
- 7. Apply positive pressure for approx. 10-15 seconds (or until no liquid remains on top of sorbent).
(Load at 85-100 PSI- Selector to the right)
- 8. Wait 5 minutes.
- 9. Add **2.25 mL MTBE** (add in 3 increments of 750 µL).
- 10. Wait 5 minutes.
- 11. Apply positive pressure for approx. 10-15 seconds. *(12-15 PSI- Selector to the left).*
- 12. Add **2.25 mL hexane** (add in 3 increments of 750 µL).
- 13. Wait 5 minutes.
- 14. Apply positive pressure for approx. 10-15 seconds. *(12-15 PSI- Selector to the left).*
- 15. Remove plate containing eluate. Place on SPE Dry and evaporate to dryness at approx. 35°C.
- 16. Reconstitute in **100 µL 100% LCMS MeOH** and heat seal plate with foil. Place in autosampler and run worklist.

Post-Analytic

- 1. Create batch and process data.
- 2. Calculated sample concentration of 3 ng/mL or greater for THC and THC-OH, a calculated sample concentration of 10 ng/mL or greater for Carboxy-THC.
- 3. Retention time within +/- 2% or +/-0.100 min whichever is greater of the average retention time of the calibrators.
- 4. Did all QCs pass for each analyte? Y / N
- 5. Central File Packet to include: LIMS Worklist, Method Checklist, Calibration and Control Reports

COMMENTS:

Curve Ranges: THC-COOH 10-250, THC-OH 3-100

\$

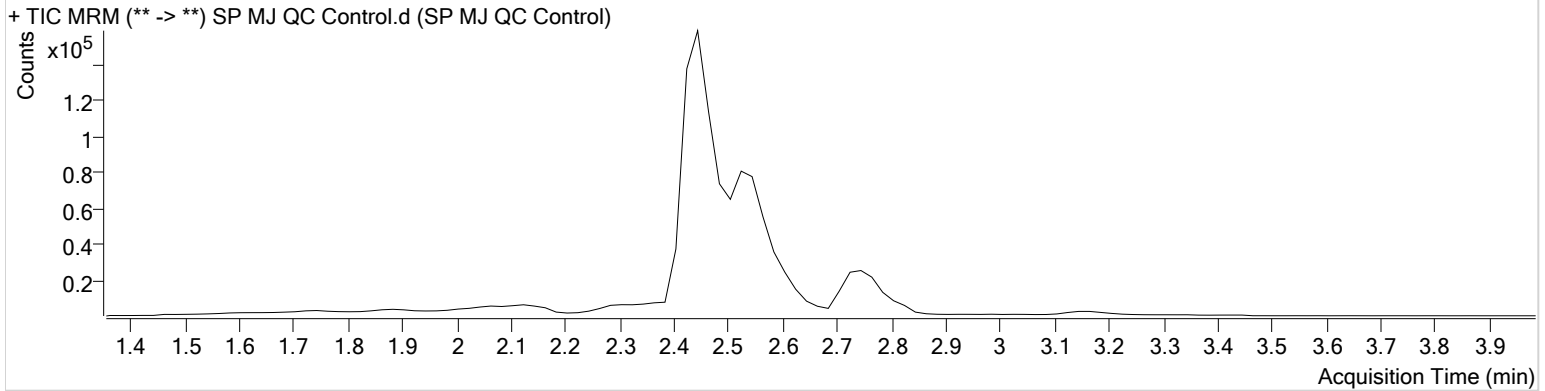


AM #26 Cannabinoids Screen Results

Batch results D:\MassHunter\Data\2020\AM 25-26\AM 25 110420 CS SJ SP\QuantResults\AM 26 SP.batch.bin
Calibration Last Update 11/9/2020 11:21:26 AM

Instrument	Falco	Data File	SP MJ QC Control.d
Type	Sample	Sample	SP MJ QC Control
Acq. Method	am 26 test.m	Operator	Sarah Pickle
Sample Position	P4-H1	Comment	
Injection Volume	10		
Acq. Date-Time	11/4/2020 5:41:03 PM		

Sample Chromatogram



Name	RT	Resp.	ISTD Resp.	Final Conc.
THC	2.779	634	12774	4.8974 ng/ml
THC-COOH	2.545	67275	125379	14.9975 ng/ml
THC-OH	2.451	14341	208625	4.9017 ng/ml

AM #26 Cannabinoids Screen Results

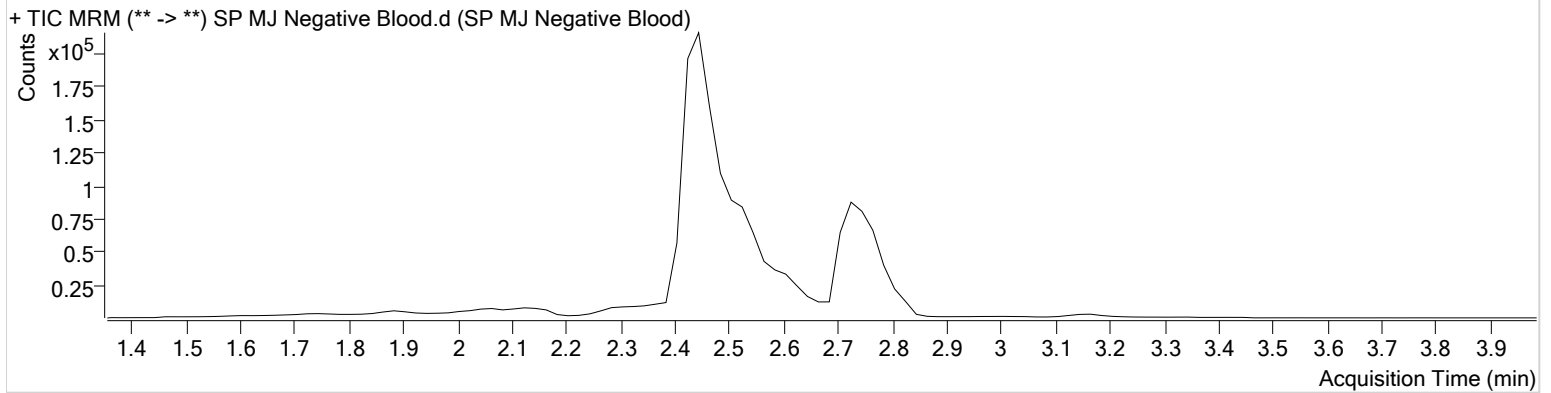
\$



Batch results D:\MassHunter\Data\2020\AM 25-26\AM 25 110420 CS SJ SP\QuantResults\AM 26 SP.batch.bin
Calibration Last Update 11/9/2020 11:21:26 AM

Instrument	Falco	Data File	SP MJ Negative Blood.d
Type	Sample	Sample	SP MJ Negative Blood
Acq. Method	am 26 test.m	Operator	Sarah Pickle
Sample Position	P4-A2	Comment	
Injection Volume	10		
Acq. Date-Time	11/4/2020 5:54:05 PM		
Sample Info.			

Sample Chromatogram



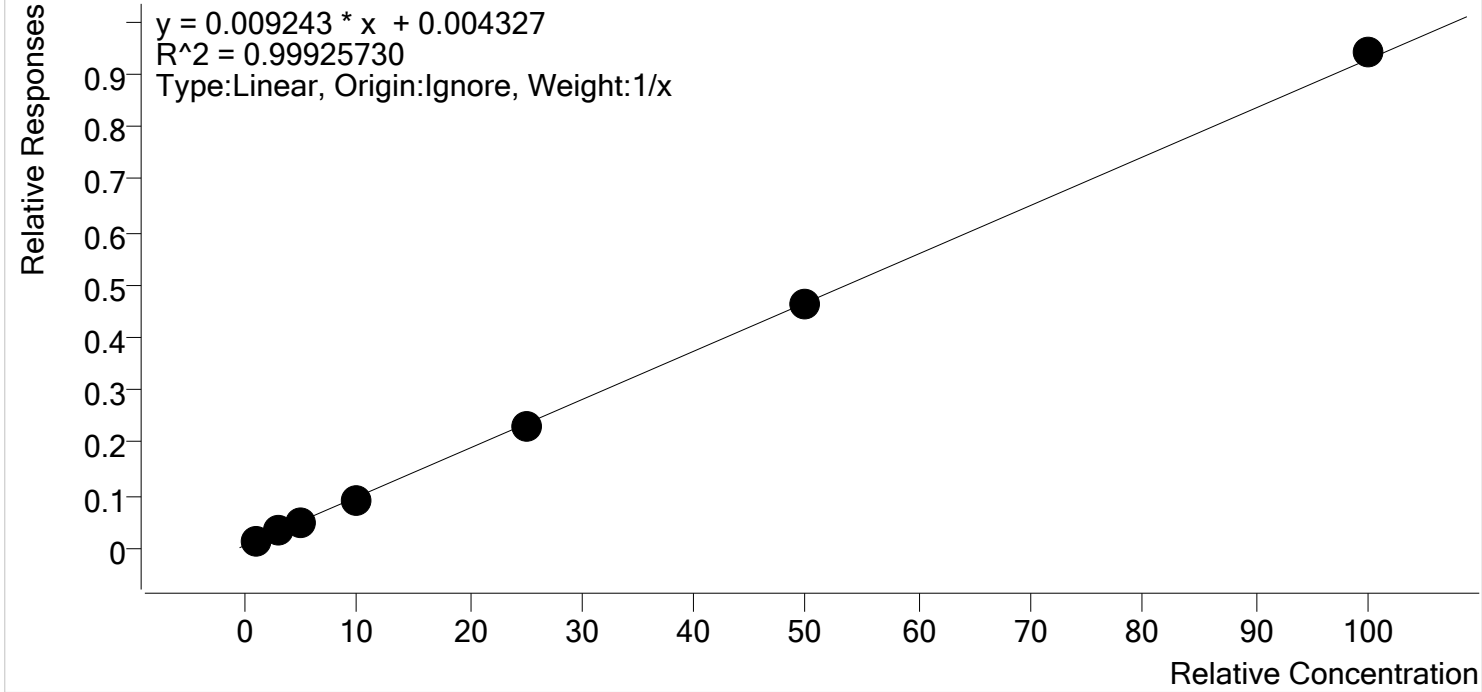
\$



AM #26 Cannabinoids Screen Calibration Curve Report

Batch results D:\MassHunter\Data\2020\AM 25-26\AM 25 110420 CS SJ SP\QuantResults\AM 26 SP.batch.bin
Last Cal. Update 11/9/2020 11:21 AM
Analyst Name ISP\datastor
Analyte THC **Internal Standard** THC-D3

THC - 7 Levels, 7 Levels Used, 7 Points, 7 Points Used, 0 QCs



Sample	Level	Enabled	Expected Concentration	Final Concentration	Accuracy
SP MJ Cal 1	1	✓	1.0	1.0	98.2
SP MJ Cal 2	2	✓	3.0	3.3	111.6
SP MJ Cal 3	3	✓	5.0	4.9	98.3
SP MJ Cal 4	4	✓	10.0	9.3	93.0
SP MJ Cal 5	5	✓	25.0	24.7	98.6
SP MJ Cal 6	6	✓	50.0	49.4	98.8
SP MJ Cal 7	7	✓	100.0	101.4	101.4

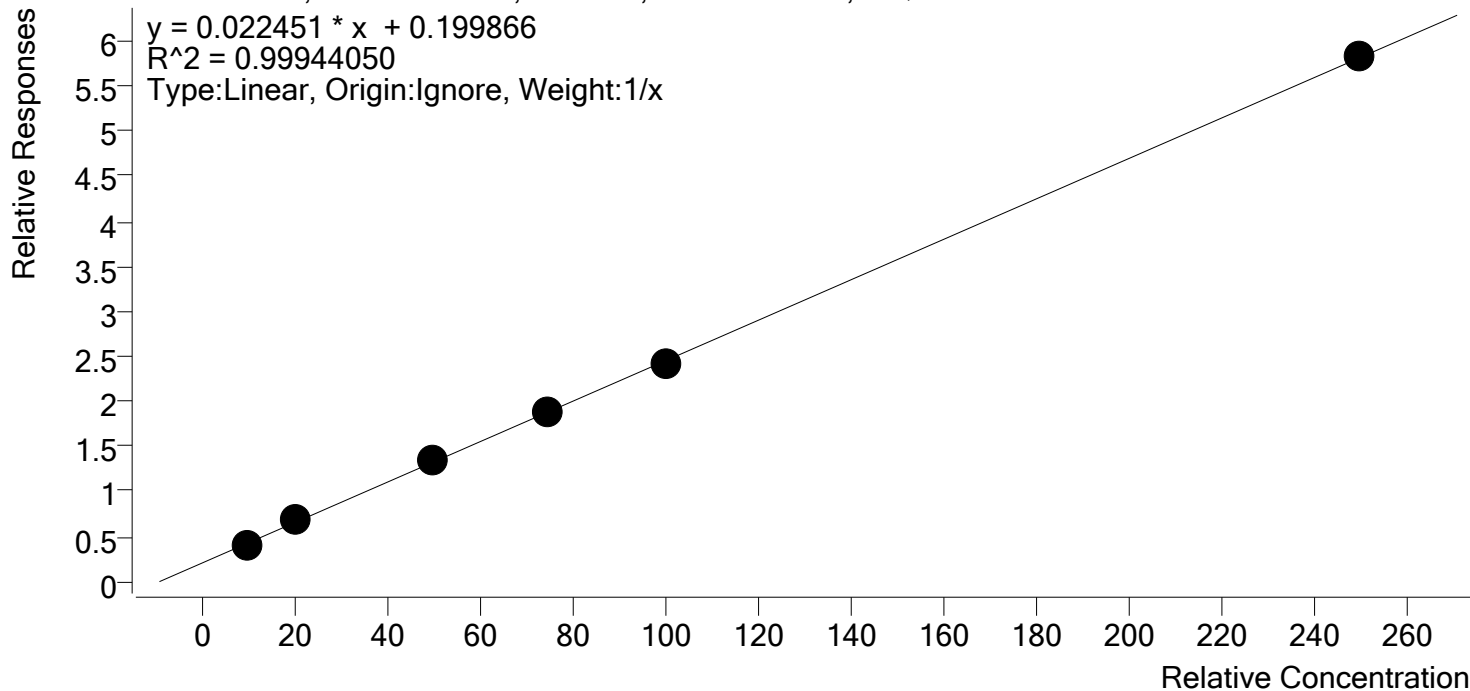
\$



AM #26 Cannabinoids Screen Calibration Curve Report

Batch results D:\MassHunter\Data\2020\AM 25-26\AM 25 110420 CS SJ SP\QuantResults\AM 26 SP.batch.bin
Last Cal. Update 11/9/2020 11:21 AM
Analyst Name ISP\datastor
Analyte THC-COOH **Internal Standard** THC-COOH-D9

THC-COOH - 6 Levels, 6 Levels Used, 6 Points, 6 Points Used, 0 QCs



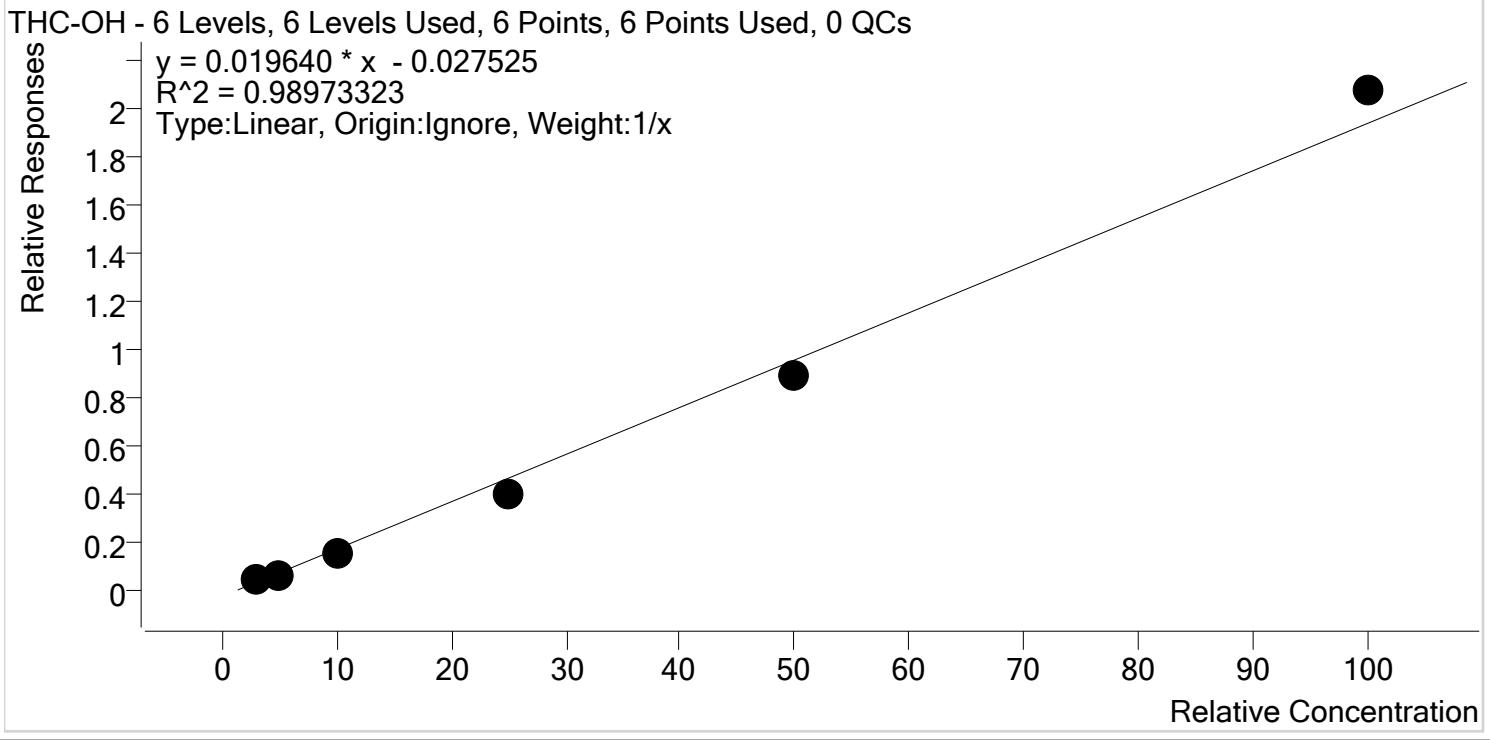
Sample	Level	Enabled	Expected Concentration	Final Concentration	Accuracy
SP MJ Cal 2	2	✓	10.0	9.4	93.6
SP MJ Cal 3	3	✓	20.0	21.5	107.5
SP MJ Cal 4	4	✓	50.0	50.3	100.7
SP MJ Cal 5	5	✓	75.0	74.5	99.3
SP MJ Cal 6	6	✓	100.0	98.7	98.7
SP MJ Cal 7	7	✓	250.0	250.7	100.3

\$



AM #26 Cannabinoids Screen Calibration Curve Report

Batch results D:\MassHunter\Data\2020\AM 25-26\AM 25 110420 CS SJ SP\QuantResults\AM 26 SP.batch.bin
Last Cal. Update 11/9/2020 11:21 AM
Analyst Name ISP\datastor
Analyte THC-OH **Internal Standard** THC-OH-D3



Sample	Level	Enabled	Expected Concentration	Final Concentration	Accuracy
SP MJ Cal 2	2	✓	3.0	3.8	126.1
SP MJ Cal 3	3	✓	5.0	4.7	94.7
SP MJ Cal 4	4	✓	10.0	9.3	93.2
SP MJ Cal 5	5	✓	25.0	21.3	85.1
SP MJ Cal 6	6	✓	50.0	47.0	94.0
SP MJ Cal 7	7	✓	100.0	106.9	106.9

\$

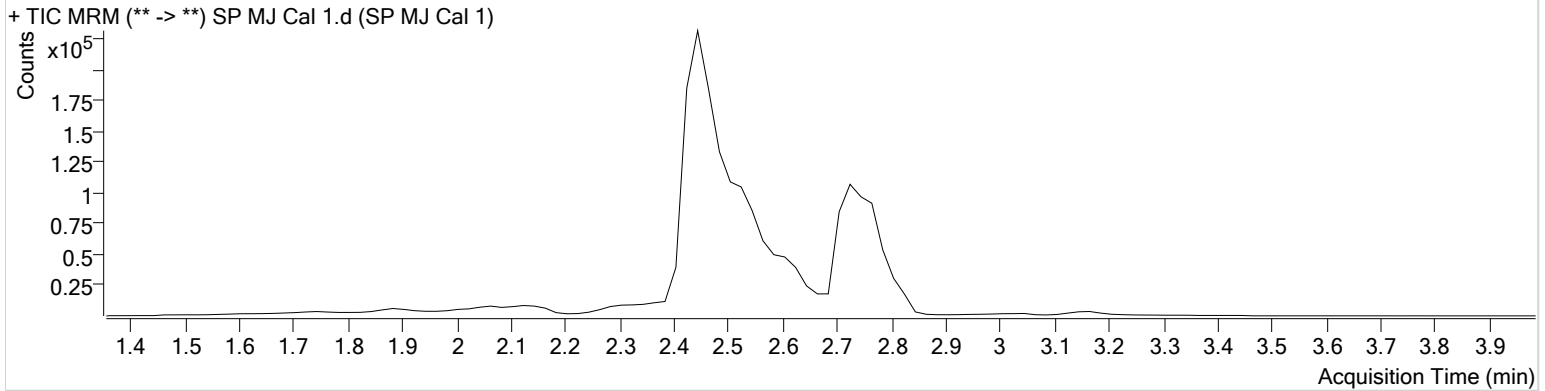


AM #26 Cannabinoids Screen Results

Batch results D:\MassHunter\Data\2020\AM 25-26\AM 25 110420 CS SJ SP\QuantResults\AM 26 SP.batch.bin
Calibration Last Update 11/9/2020 11:21:26 AM

Instrument	Falco	Data File	SP MJ Cal 1.d
Type	Cal	Sample	SP MJ Cal 1
Acq. Method	am 26 test.m	Operator	Sarah Pickle
Sample Position	P4-A1	Comment	
Injection Volume	10		
Acq. Date-Time	11/4/2020 4:55:20 PM		

Sample Chromatogram



Name	RT	Resp.	ISTD Resp.	Final Conc.
THC	2.779	645	48146	0.9819 ng/ml Low

\$

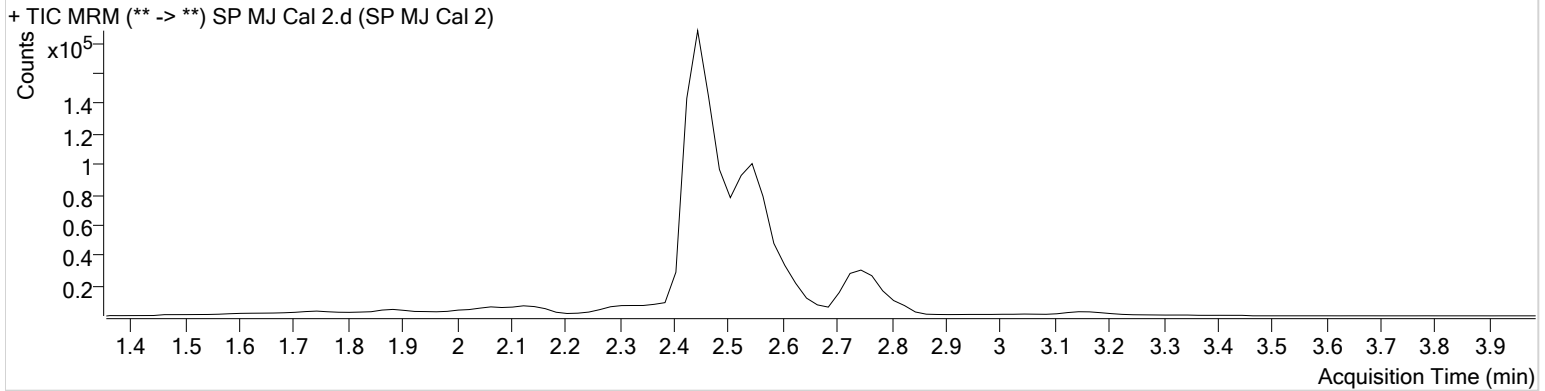


AM #26 Cannabinoids Screen Results

Batch results D:\MassHunter\Data\2020\AM 25-26\AM 25 110420 CS SJ SP\QuantResults\AM 26 SP.batch.bin
Calibration Last Update 11/9/2020 11:21:26 AM

Instrument	Falco	Data File	SP MJ Cal 2.d
Type	Cal	Sample	SP MJ Cal 2
Acq. Method	am 26 test.m	Operator	Sarah Pickle
Sample Position	P4-B1	Comment	
Injection Volume	10		
Acq. Date-Time	11/4/2020 5:02:01 PM		

Sample Chromatogram



Name	RT	Resp.	ISTD Resp.	Final Conc.
THC	2.779	493	13982	3.3492 ng/ml
THC-COOH	2.545	76696	187064	9.3597 ng/ml
THC-OH	2.451	10879	232488	3.7841 ng/ml

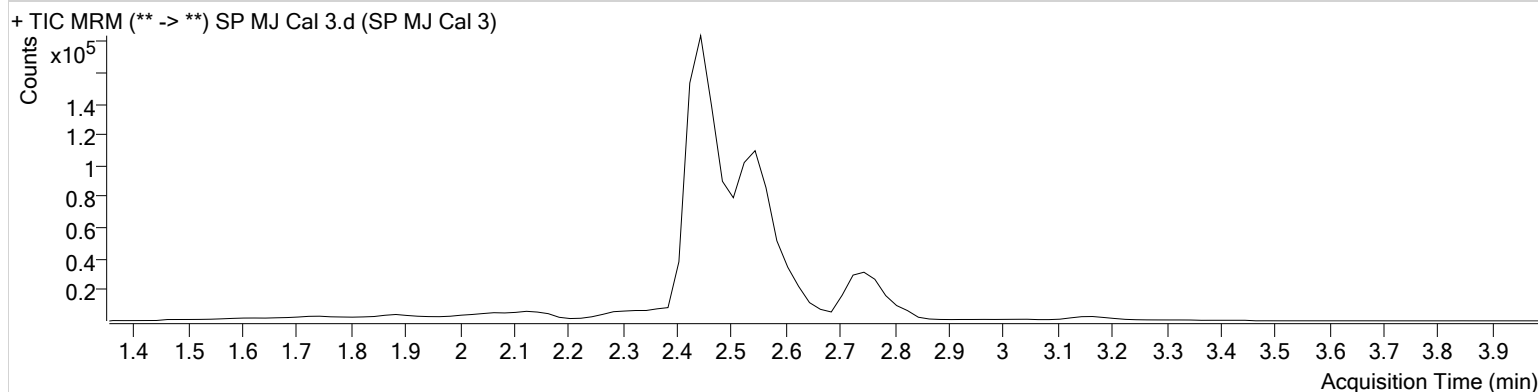
AM #26 Cannabinoids Screen Results



Batch results D:\MassHunter\Data\2020\AM 25-26\AM 25 110420 CS SJ SP\QuantResults\AM 26 SP.batch.bin
Calibration Last Update 11/9/2020 11:21:26 AM

Instrument	Falco	Data File	SP MJ Cal 3.d
Type	Cal	Sample	SP MJ Cal 3
Acq. Method	am 26 test.m	Operator	Sarah Pickle
Sample Position	P4-C1	Comment	
Injection Volume	10		
Acq. Date-Time	11/4/2020 5:08:33 PM		

Sample Chromatogram



Name	RT	Resp.	ISTD Resp.	Final Conc.
THC	2.779	748	15037	4.9164 ng/ml
THC-COOH	2.545	120118	175937	21.5078 ng/ml
THC-OH	2.451	17151	262113	4.7332 ng/ml

\$

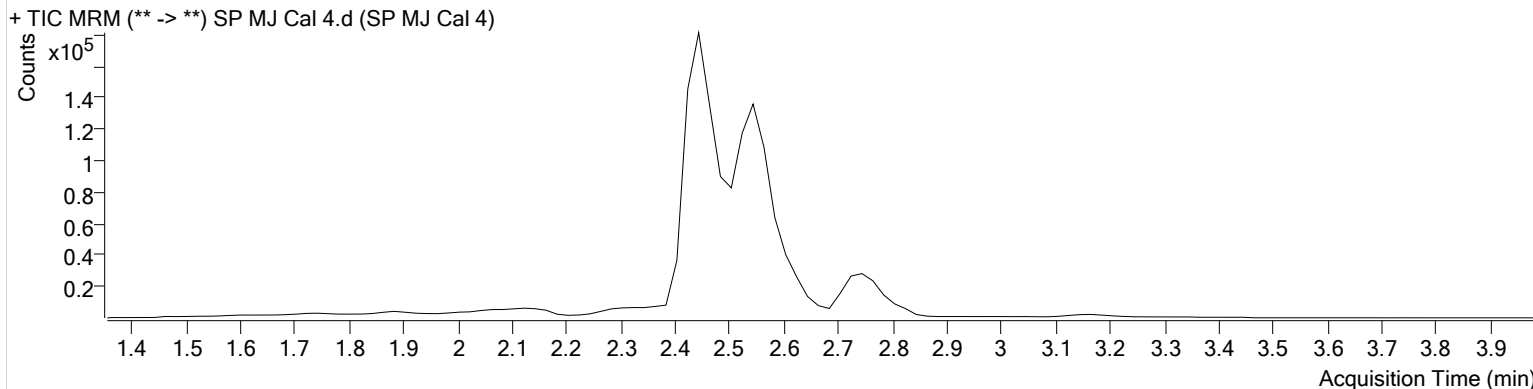


AM #26 Cannabinoids Screen Results

Batch results D:\MassHunter\Data\2020\AM 25-26\AM 25 110420 CS SJ SP\QuantResults\AM 26 SP.batch.bin
Calibration Last Update 11/9/2020 11:21:26 AM

Instrument	Falco	Data File	SP MJ Cal 4.d
Type	Cal	Sample	SP MJ Cal 4
Acq. Method	am 26 test.m	Operator	Sarah Pickle
Sample Position	P4-D1	Comment	
Injection Volume	10		
Acq. Date-Time	11/4/2020 5:15:03 PM		

Sample Chromatogram



Name	RT	Resp.	ISTD Resp.	Final Conc.
THC	2.779	1242	13759	9.3013 ng/ml
THC-COOH	2.545	194062	145937	50.3281 ng/ml
THC-OH	2.451	34887	224370	9.3187 ng/ml

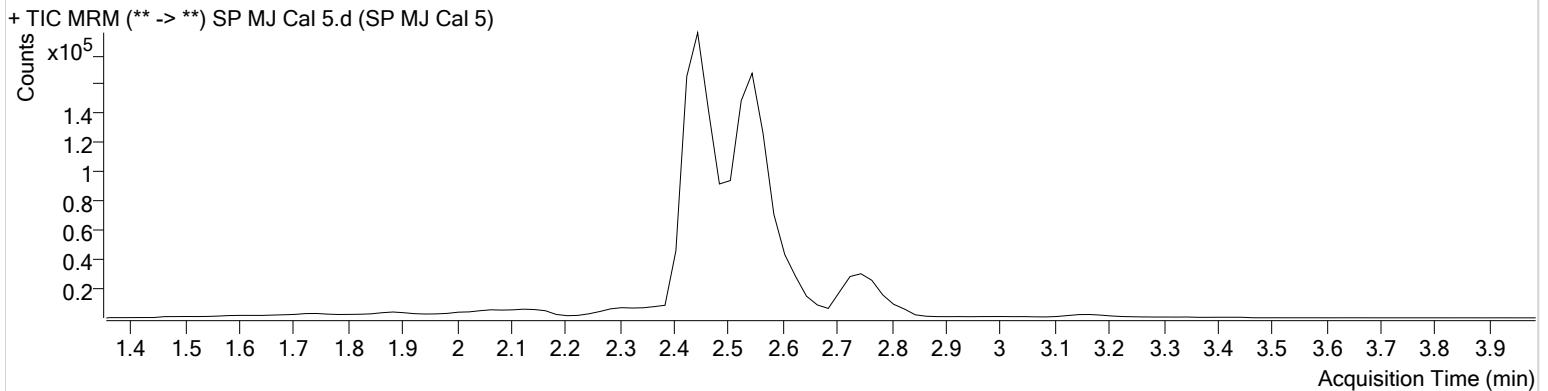
AM #26 Cannabinoids Screen Results



Batch results D:\MassHunter\Data\2020\AM 25-26\AM 25 110420 CS SJ SP\QuantResults\AM 26 SP.batch.bin
Calibration Last Update 11/9/2020 11:21:26 AM

Instrument	Falco	Data File	SP MJ Cal 5.d
Type	Cal	Sample	SP MJ Cal 5
Acq. Method	am 26 test.m	Operator	Sarah Pickle
Sample Position	P4-E1	Comment	
Injection Volume	10		
Acq. Date-Time	11/4/2020 5:21:33 PM		

Sample Chromatogram



Name	RT	Resp.	ISTD Resp.	Final Conc.
THC	2.779	3246	13973	24.6610 ng/ml
THC-COOH	2.545	264429	141306	74.4501 ng/ml
THC-OH	2.451	88828	227509	21.2817 ng/ml

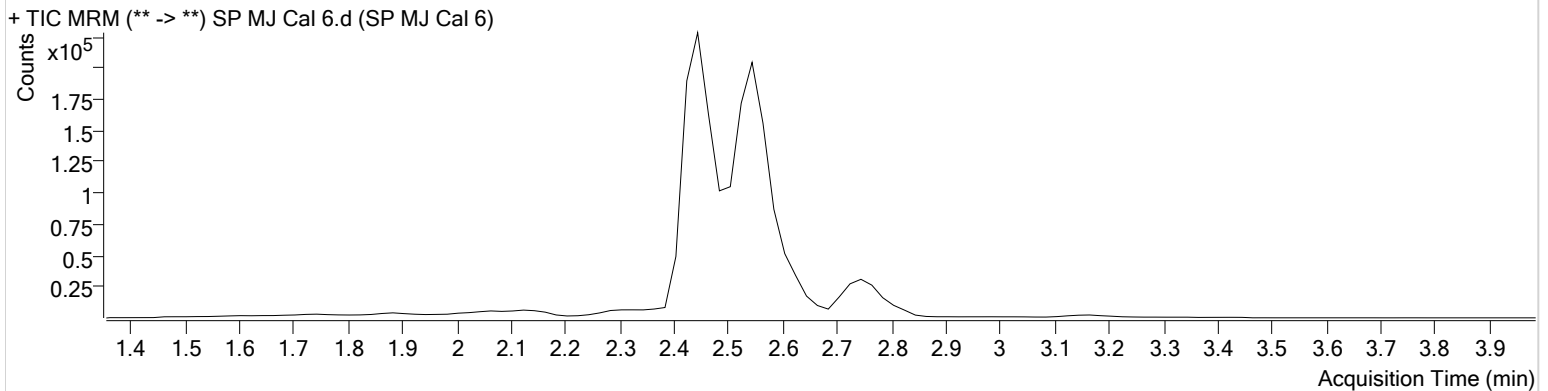
AM #26 Cannabinoids Screen Results



Batch results D:\MassHunter\Data\2020\AM 25-26\AM 25 110420 CS SJ SP\QuantResults\AM 26 SP.batch.bin
Calibration Last Update 11/9/2020 11:21:26 AM

Instrument	Falco	Data File	SP MJ Cal 6.d
Type	Cal	Sample	SP MJ Cal 6
Acq. Method	am 26 test.m	Operator	Sarah Pickle
Sample Position	P4-F1	Comment	
Injection Volume	10		
Acq. Date-Time	11/4/2020 5:28:03 PM		

Sample Chromatogram



Name	RT	Resp.	ISTD Resp.	Final Conc.
THC	2.779	6472	14044	49.3903 ng/ml
THC-COOH	2.545	336129	139186	98.6651 ng/ml
THC-OH	2.451	208676	232994	47.0046 ng/ml

\$

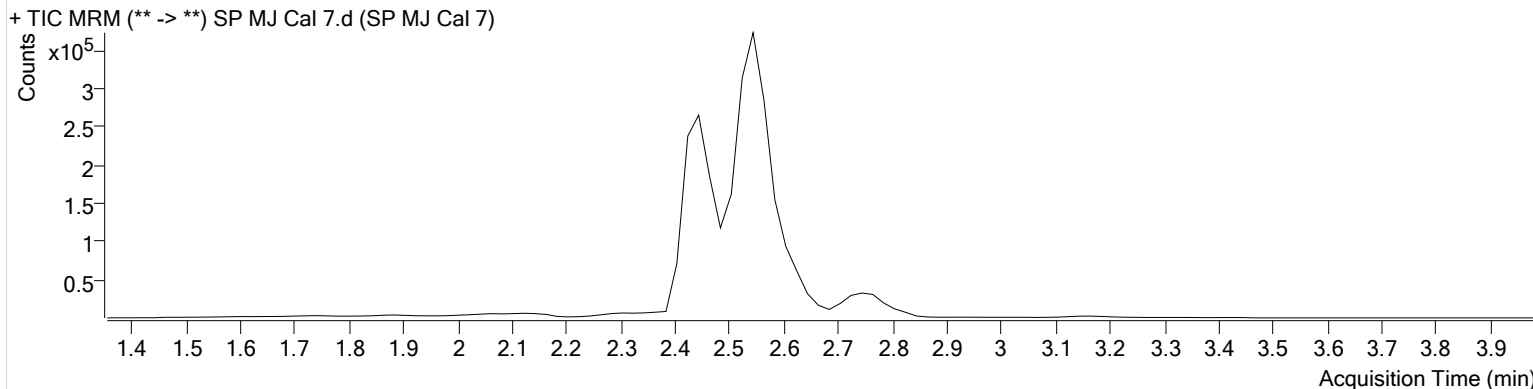


AM #26 Cannabinoids Screen Results

Batch results D:\MassHunter\Data\2020\AM 25-26\AM 25 110420 CS SJ SP\QuantResults\AM 26 SP.batch.bin
Calibration Last Update 11/9/2020 11:21:26 AM

Instrument	Falco	Data File	SP MJ Cal 7.d
Type	Cal	Sample	SP MJ Cal 7
Acq. Method	am 26 test.m	Operator	Sarah Pickle
Sample Position	P4-G1	Comment	
Injection Volume	10		
Acq. Date-Time	11/4/2020 5:34:33 PM		

Sample Chromatogram



Name	RT	Resp.	ISTD Resp.	Final Conc.
THC	2.779	13601	14445	101.3999 ng/ml
THC-COOH	2.545	745720	127954	250.6891 ng/ml
THC-OH	2.451	459605	221869	106.8777 ng/ml